

Information Technology and Mission Critical



There is a reason Facebook is building one of the most advanced data centers in the world in New Albany. *We get business.*

“ When considering a new location for a data center, we look for clean and renewable energy solutions, a strong pool of talent for both construction and long-term operations staff, and great partnerships within the local community. We found all of this in New Albany. ”

~ Rachel Peterson *Director of Data Center Strategy and Development, Facebook*



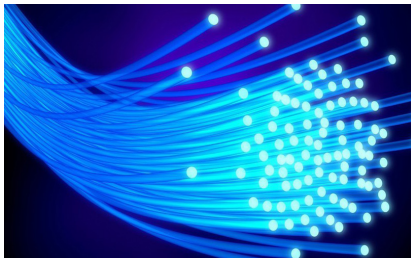
WE GET BUSINESS.

Information Technology and Mission Critical Cluster

Companies

AEP Data Center / AEP Mission Critical / AEP Transmissions / Amazon Web Services / Discover Data Center / Facebook Data Center / Motorists Data Center / Nationwide Data Center / PCM / TJX Data Center

Advantages



Robust high-speed fiber optics

- 96-strand secure, redundant fiber network
- Carrier neutral network with access to 200+ carriers
- Speeds up to 10Gbps
- 3 points of presence (POP)
- Dedicated high-speed OARnet connects to Ohio's research institutions

Triple feed electric capabilities

- Redundant power systems
- In excess of 500 MW capacity
- 138 kV transmission network with double capacity
- 345 kV and 138 kV enhancements

Affordable, abundant natural resources

- 2 MGD water capacity
- More than 10 MGD of storage
- 49 MGD pumping capacity

Attractive tax incentives

- 100% property tax abatement
- Ohio Job Creation Tax Credit
- State Data Center Incentive

Highly-educated, lower cost workforce

- Skilled IT workforce
- Ohio software engineers' average wages are 40% less than in California
- 1.3 million workforce within 45 miles
- 60+ colleges and universities in region, including The Ohio State University



- Columbus region ranks
 - 1st Top Tech Talent Markets (CBRE)
 - 1st Best Cities for Mid-Career Professionals (Forbes)
 - 3rd Best City for Tech Worker (SmartAsset)
 - 10th in Highest Concentration of Computer Programmers (JLL)
 - Winner, Smart Cities Challenge (ODOT 2017)
 - Top Intelligent Community (ICF 2015)

The New Albany International Business Park

Assets

- Region's largest master-planned business park
- Pre-zoned sites
- Complementary site planning
- One-stop location resources
- 25% faster permitting
- Technology-ready, shovel-ready sites
- Ample land for development
- Four highway interchanges
- Express transit service
- Easy commutes



Columbus Metropolitan Region

The 14th largest city in the country, Columbus is also the fastest growing metropolitan area in the Midwest. Its strong entrepreneurial spirit – the city ranks first in scaling startups – makes it a great place to innovate. It's home to Battelle Memorial Institute, the world's largest nonprofit research organization, and the IBM Center for Advanced Analytics. It offers one of the largest populations of college graduates—36,000 annually—in the nation. An affordable cost of living, vibrant communities, good schools and low crime rate led *Money* magazine to rate Columbus as the best big city in the Midwest.



For more information contact
Jennifer Chrysler, Director of Community
Development, at 614.939.2259